



Brochure

Supplier of Concrete Flags

Manufactured to BS EN 1339:2003 Inc. Corr. No.1

Please contact us:

HEAD OFFICE:

**Hoddam Contracting LTD
Hoddam Road
Ecclefechan
Lockerbie DG11 3BY**

Tel: 01576 300279

Email: enquires@hoddam.co.uk

Web: <http://hoddamcontracting.co.uk/>

Facebook: [@hoddamcontracting](https://www.facebook.com/hoddamcontracting)

Concrete Flags:

British Standard Paving

Manufactured to BS EN 1339:2003 Inc. Corr. No.1

All products are CE marked, together with the associated Declaration of Performance (DoP) (PDF available on request quoting F1)

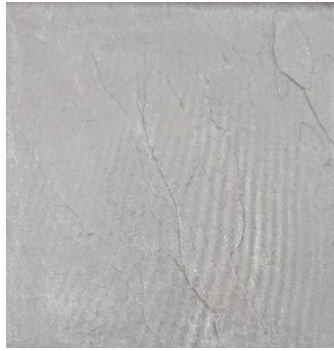
Product Description	Stipulated (or assumed) End Use	Applicable Size (LxHxW) mm	Pack Sizes
Class 1 Paving Flags – British Standard (Natural, Buff and Red) (F1)	Concrete flag units (internal flooring, external flooring and roof applications)	450 x 450 x 50 (18" x 18")	450 x 450 – 40no Unit weight – 23kg Pack weight – 0.920 ton
		600 x 600 x 50 (2 x 2) 900 x 600 x 50 (3 x 2)	
		Tactile – 400 x 400 x 50 Tactile - 450 x 450 x 50 (red and buff only)	600 x 600 – 20no Unit weight – 41kg Pack weight – 0.820 ton
			900 x 600 – 20no Unit weight – 64kg Pack weight – 1.28 ton

Pictured left is a British Standard 600 x 600

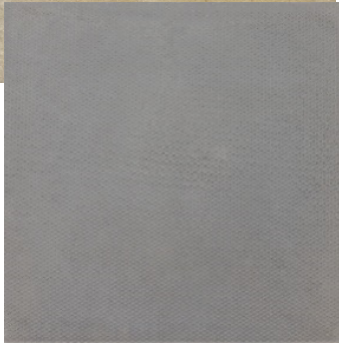


DIY Paving

Product Description	Applicable Size (LxHxW) mm	Pack Sizes
DIY slab – Riven Faced & Square edge (Natural, Buff, Red and Charcoal) *Colours pictured below	450 x 450 x 40 (18" x 18")	450 x 450 – 50no Unit Weight – 15kg Pack Weight – 0.75 ton



**Buff Riven, Charcoal Riven, Natural Riven and Red Riven*



**Charcoal Square, Buff Square, Red Square and Natural Square*

Hoddam Contracting Co. LTD do not recommend British Standard concrete paving slabs to be used for decorative projects such as feature patios due to the difference of colour, shade and texture that may vary in natural aggregates. Should the customer choose to accept the use of the range for patio projects, Hoddam Contracting Co LTD will not be held responsible for lack of uniformity subsequently displayed in the finished products appearance. Hoddam Contracting Co LTD try to adhere to promote sound advice to customers and best practice for all our products.